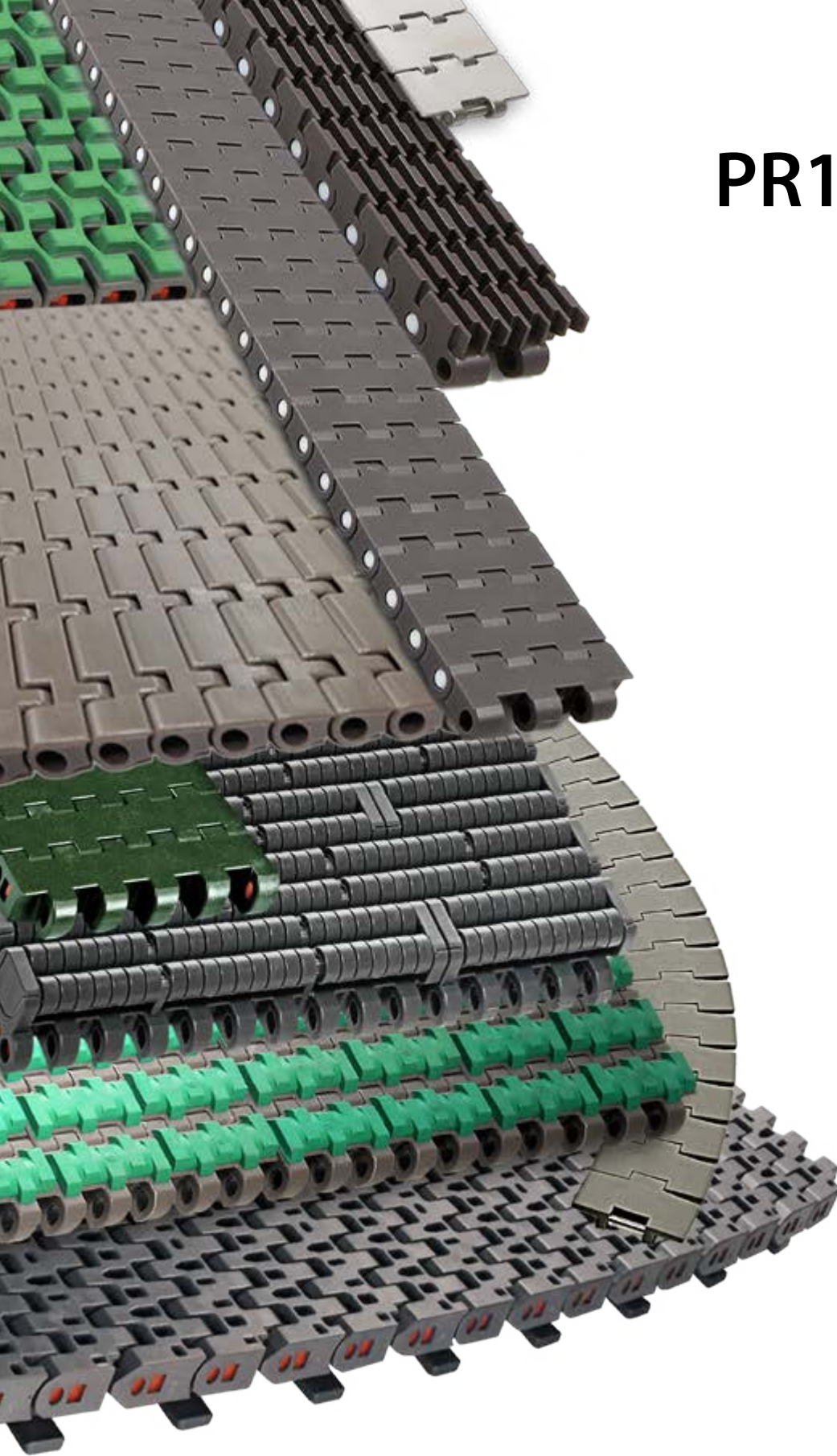


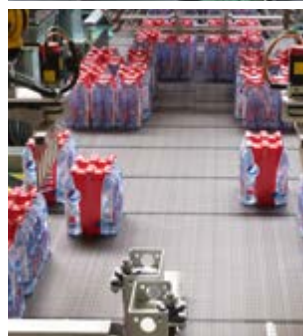
PR17e



Production Range



PERFORMANCE IN MOTION



FliteTop® *Matveyor*® **ULTOP**®



Steel and Thermoplastic Chains, Modular Belts

	Type	Description	Features
STEEL	S	Carbon Steel	Through hardened carbon steel. Surface and core hardness of 43 HRC. Excellent strength and wear resistance. Not suitable in presence of water.
	SS - 4	Ferritic Stainless Steel	Cold rolled ferritic stainless steel. Good wear, mechanical and corrosion resistance. For food & beverage applications.
	P	PRIMA Superior Grade Ferritic Stainless Steel	Superior grade of cold rolled special ferritic stainless steel. Special Cr-Ni alloy offering very good wear and mechanical properties. Particularly suitable for high productivity lines (combiners and inliners).
	SS	Austenitic Stainless Steel	Cr-Ni austenitic cold rolled stainless steel. It guarantees the best corrosion resistance to withstand chemical attack. It offers very good wear resistance, due to work hardening and homogeneous chemical structure.
ACETAL POM	WA <i>White</i>	White Acetal	DuPont™ Delrin® homopolymer acetal resin.
	UP <i>Dark Brown</i>	Ultra Performance Homopolymer Delrin®	DuPont™ Delrin® Ultra Performance special homopolymer acetal resin. Particularly suitable for applications where low coefficient of friction and contained dusting are needed.
	DKK2™ <i>Dark Green</i>	Special Delrin® Reinforced with Kevlar®	Next generation material, based on a Delrin® acetal resin reinforced with Kevlar®, developed by REGINA and DuPont™, able to reach the lowest coefficient of friction with maximum wear resistance. Thanks to the superior properties of DKK2™ , the usage of lubricants can be drastically reduced or even eliminated without losing performance in conveyor applications.
	AS <i>Black</i>	Antistatic Acetal Resin	Conductive acetal resin particularly suitable for all applications where static charges on the chain must be avoided.
POLYAMIDE	AR <i>Black</i>	Abrasion Resistance Polyamide	Suitable for glass manufacturing applications. Reinforced polyamide with excellent wear resistance and low dusting. Only for dry running applications.
POLYPROPYLENE	P <i>Light Blue</i>	Reinforced Polypropylene	For FliteTop® Chains. Reinforced polypropylene that guarantees the best corrosion resistance to withstand chemical attack and an optimum high temperature resistance.
	PP <i>Grey</i>	Special Polypropylene	For Matveyor® Belts. Special polypropylene that guarantees the best corrosion resistance to withstand chemical attack and an optimum high temperature resistance.
POLYESTER	ULF <i>Light Grey</i>	Ultra Low Friction Polyester Resin	Polyester resin that offers good mechanical strength in combination with low coefficient of friction.

Rubbers

Type	Description	Features
NBR <i>Black</i>	NBR Rubber	NBR Rubber with hardness of 70 ShA, applied on stainless steel chains, guarantees an excellent product grip on inclined/declined conveyors, high wear resistance and superior resistance against sanitizers ordinary used in bottling industries.
TPE <i>Green</i>	Thermoplastic Rubber	Special Thermoplastic rubber with hardness from 50 ShA up to 70 ShA and optimum wear resistance that guarantees exceptional product grip in inclined/declined conveyors and elevators/lowerators, extending life without losing elasticity.
TPE <i>Grey</i>		
HS <i>Grey</i>	Heat Stabilized Thermoplastic Rubber	Special Thermoplastic rubber resistant to high temperatures, with hardness from 45 ShA to 70 ShA, for rinsers and cap sterilizer applications.
EPDM <i>Black</i>	EPDM Rubber	For gripper chain series. EPDM rubber with hardness of 60 ShA guarantees an excellent grip and high temperature resistance.

Base Roller Chains

Type	Description	Features
	Carbon Steel	Through hardened carbon steel. Excellent strength and wear resistance.
	Stainless Steel	Stainless Steel for the best corrosion resistance to withstand chemical attack. Prelubricated with high performance lube suitable for the food industry (USDA H1 approved) which guarantees long-lasting effect for the chain.
	Maintenance free carbon steel	For "lube-free" applications. ENDURO maintenance free chains outlast standard chains without periodic lubrication. The unique technology and "heavy wall" design of the sintered bushing ensures excellent wear resistance.
	Carbon Steel Nickel Plated	Through hardened carbon steel and electroless nickel plating for good corrosion resistance. Excellent strength and wear resistance.

Sprockets and Turning Discs

Type	Description	Features
PA <i>Black</i>	Polyamide	For sprockets. Machined polyamide that guarantees toughness combined with wear and abrasion resistance.
PGF <i>Black</i>	Reinforced Polyamide	For sprockets and turning discs. Moulded polyamide reinforced with glass fibers allowing higher strength and excellent abrasion resistance.
WA <i>White</i>	White Acetal	For sprockets 3000 series. DuPont™ Delrin® homopolymer acetal resin.

Curves and Static Nosebar

Type	Description	Features
POLYETHYLENE	 UHMWPE Green	For Magnetic and Low Pin Center curves. Ultra high molecular weight polyethylene (about 7 milion gr/mole) with good wear resistance and low coefficient of friction.
	 Self-Lubricating UHMWPE Grey	For Magnetic, TAB, Bevel, Low Pin Center curves and for ½" pitch belts nosebar. High grade of ultra high molecular weight polyethylene (about 7-9 milion gr/mole) with optimum wear and abrasion resistance, combined with advanced lubricant for excellent sliding properties.
	 UHMWPE Black	For Bevel and TAB curves. Ultra high molecular weight polyethylene with good wear and abrasion resistance.
POLY AMIDE	 Oil-Filled PA Yellow	For Magnetic, TAB, Bevel and Low Pin Center curves. Special high grade and oil-filled polyamide, with superior abrasion resistance and extremely high PV limit. Dry running only.

Conveyor Components

Type	Description	Features
ACETAL POM	 Acetal Resin Dark Grey	For combs. Good wear resistance and low coefficient of friction.
POLYETHYLENE	 High Density Polyethylene Black	For return rollers, product side guide and shoe guide. High density polyethylene with low coefficient of friction and good wear resistance.
	 Grey	
	 Green	
	 UHMWPE Green	For wear strips. Ultra high molecular weight polyethylene with reduced coefficient of friction and high wear resistance.
 Black		
POLYPROPYLENE	 Polypropylene Black	For guide flanges. Lightweight material that offers optimum chemical and high temperature resistance.

Applications

FliteTop[®] CHAINS

CONVEYED
PRODUCTS

PRODUCTS

STEEL CHAINS

Carbon
Steel

Ferritic
SS-4

Austenitic
SS

PHD Series*

Rubberized
Series

	CONVEYED PRODUCTS	APPLICATIONS	PRODUCTS				
			Carbon Steel	Ferritic SS-4	Austenitic SS	PHD Series*	Rubberized Series
FOOD / BEVERAGE / BOTTLING APPLICATIONS	CANS (2-3 PIECES)	Depalletizer					
		Inliner/combiner					
		Mass conveyors					
		Accumulation tables					
		Sterilizers / Rinsers Elevators / Lowerators					
		Infeed packaging machines					
		Packaging machines					
		Packaged products convey					
		Inclined conveyors					
	PET BOTTLES	Inliner/combiner					
		Mass conveyors					
		Accumulation tables					
		Sterilizers / Rinsers Elevators / Lowerators					
		Infeed packaging machines					
		Packaging machines					
		Packaged products convey					
		Inclined conveyors					
		GLASS BOTTLES**	Depalletizer				
	Inliner/combiner						
	Mass conveyors						
	Accumulation tables						
	Sterilizers / Rinsers Elevators / Lowerators						
	Infeed packaging machines						
	Packaging machines						
	Packaged products convey						
	Inclined conveyors						
	GLASS MFG.	GLASS BOTTLES	Inliner/combiner				
Mass conveyors							
Accumulation tables							
Palletizer							
Omega / Blowing Machines							
SPECIAL APPLICATIONS	AUTOMOTIVE / MECHANICAL IND.	Conveyors lines					
	CHEMICAL, DETERGENTS, PHARMACEUTICAL AND COSMETICS IND.	Conveyors lines					
	DAIRY IND.	Conveyors lines					

* PHD Series features PRIMA material plates and hardened martensitic stainless steel pins.

** In case of returnable glass bottles, please contact REGINA Application Engineers.

Applications

CONVEYED PRODUCTS		Matveyor® ULTOP® CHAINS/ BELTS	PRODUCTS							
			NANOPITCH (8mm)	LIGHT DUTY SHORT PITCH (½")				LIGHT DUTY (1" PITCH)		
			8300	600 610 300	500 200	HF 510 HF 200	611 RR611	LBP610	1600	1500
FOOD / BEVERAGE / BOTTLING APPLICATIONS	CANS (2-3 PIECES)	Depalletizer								
		Inliner/combiner								
		Mass conveyors								
		Accumulation tables								
		Warmer								
		Infeed packaging machines								
		Packaging machines								
		Packaged products convey								
	PET BOTTLES	Inliner/combiner								
		Mass conveyors								
		Accumulation tables								
		Warmer								
		Infeed packaging machines								
		Packaging machines								
		Packaged products convey								
	GLASS BOTTLES	Depalletizer								
		Inliner/combiner								
		Mass conveyors								
		Accumulation tables								
		Pasteurizer								
		Infeed packaging machines								
		Packaging machines								
		Packaged products convey								
	GLASS MFG.	GLASS BOTTLES	Inliner/combiner							
			Mass conveyors							
			Accumulation tables							
			Palletizer							
	SPECIAL APPLICATIONS	PHARMACEUTICAL DETERGENT COSMETICS CONTAINERS	Conveyors lines							
BAKERY		Conveyors lines								
PAPER/ CARDBOARD		Conveyors lines								

Straight Running Steel Chains

915 - Single Hinge, Reduced Plate Gap (1,6 mm)

Width		Pitch		Thickness		Gap		Hinge		Materials	
inch	mm	inch	mm	inch	mm	inch	mm	inch	mm	Plate	
2 ¼	57,1	1 ½	38,1	0.118	3	0.063	1,6	1.654	42		P
2 ½	63,5	1 ½	38,1	0.118	3	0.063	1,6	1.654	42		P
2 ¾	66,7	1 ½	38,1	0.118	3	0.063	1,6	1.654	42		P
3 ¼	82,6	1 ½	38,1	0.118	3	0.063	1,6	1.654	42	S	SS-4 P SS
3.30	83,8	1 ½	38,1	0.118	3	0.063	1,6	1.654	42		SS-4 P
3 ½	88,9	1 ½	38,1	0.118	3	0.063	1,6	1.654	42		P
4	101,6	1 ½	38,1	0.118	3	0.063	1,6	1.654	42	S	P SS
4 ½	114,3	1 ½	38,1	0.118	3	0.063	1,6	1.654	42	S	SS-4 P SS
6	152,4	1 ½	38,1	0.118	3	0.063	1,6	1.654	42	S	P SS
7 ½	190,5	1 ½	38,1	0.118	3	0.063	1,6	1.654	42	S	SS-4 P SS

PHD 915 - Single Hinge, Reduced Plate Gap (1,6 mm), Heat Treated Pin

Width		Pitch		Thickness		Gap		Hinge		Materials
inch	mm	inch	mm	inch	mm	inch	mm	inch	mm	Plate
3 ¼	82,6	1 ½	38,1	0.118	3	0.063	1,6	1.654	42	P
3.30	83,8	1 ½	38,1	0.118	3	0.063	1,6	1.654	42	P
4 ½	114,3	1 ½	38,1	0.118	3	0.063	1,6	1.654	42	P
7 ½	190,5	1 ½	38,1	0.118	3	0.063	1,6	1.654	42	P

2815 - Double Hinge

Width		Pitch		Thickness		Gap		Hinge		Materials	
inch	mm	inch	mm	inch	mm	inch	mm	inch	mm	Plate	
7 ½	190,5	1 ½	38,1	0.118	3	0.071	1,8	3.150	80	S	SS-4 P SS

PHD 9157 - Heavy Duty Single Hinge, Reduced Plate Gap, Heat Treated Pin

Width		Pitch		Thickness		Gap		Hinge		Materials
inch	mm	inch	mm	inch	mm	inch	mm	inch	mm	Plate
7 ½	190,5	1 ½	38,1	0.118	3	0.063	1,6	2.244	57	P

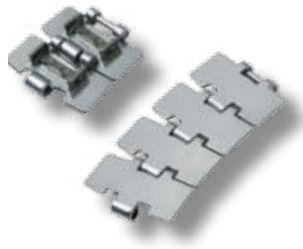
803 - Mini Hinge

Width		Pitch		Thickness		Gap		Hinge		Materials
inch	mm	inch	mm	inch	mm	inch	mm	inch	mm	Plate
1 ¼	31,8	1 ½	38,1	0.118	3	0.110	2,8	0.866	22	P
1 ¾	44,5	1 ½	38,1	0.118	3	0.110	2,8	0.866	22	P

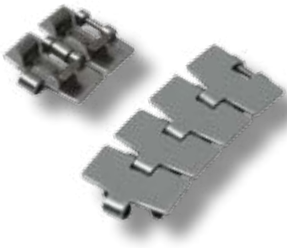
Sideflexing Steel Chains

881 - Bevel

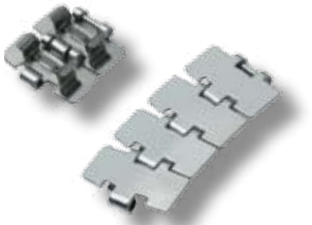
Width		Pitch		Thickness		Sideflexing Radius		Hinge		Materials	
inch	mm	inch	mm	inch	mm	inch	mm	inch	mm	Plate	
3 ¼	82,6	1 ½	38,1	0.118	3	18	457,2	1.693	43	S	SS
4 ½	114,3	1 ½	38,1	0.118	3	24	609,6	1.693	43	S	SS
7 ½	190,5	1 ½	38,1	0.118	3	24	609,6	1.693	43	S	SS



981 – Bevel, Reduced Plate Gap											
Width		Pitch		Thickness		Sideflexing Radius		Hinge		Materials	
inch	mm	inch	mm	inch	mm	inch	mm	inch	mm	Plate	
3 ¼	82,6	1 ½	38,1	0.118	3	18	457,2	1.693	43	P	
3.30	83,8	1 ½	38,1	0.118	3	18	457,2	1.693	43	P	
4 ½	114,3	1 ½	38,1	0.118	3	24	609,6	1.693	43	P	
7 ½	190,5	1 ½	38,1	0.118	3	24	609,6	1.693	43	P	



881T – TAB											
Width		Pitch		Thickness		Sideflexing Radius		Hinge		Materials	
inch	mm	inch	mm	inch	mm	inch	mm	inch	mm	Plate	
3 ¼	82,6	1 ½	38,1	0.118	3	18	457,2	1.693	43	S	SS
4 ½	114,3	1 ½	38,1	0.118	3	24	609,6	1.693	43	S	SS
7 ½	190,5	1 ½	38,1	0.118	3	24	609,6	1.693	43	S	SS



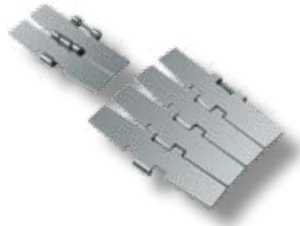
981T – TAB, Reduced Plate Gap											
Width		Pitch		Thickness		Sideflexing Radius		Hinge		Materials	
inch	mm	inch	mm	inch	mm	inch	mm	inch	mm	Plate	
3 ¼	82,6	1 ½	38,1	0.118	3	18	457,2	1.693	43	P	
3.30	83,8	1 ½	38,1	0.118	3	18	457,2	1.693	43	P	
4 ½	114,3	1 ½	38,1	0.118	3	24	609,6	1.693	43	P	
7 ½	190,5	1 ½	38,1	0.118	3	24	609,6	1.693	43	P	



981M – Magnetic, Reduced Plate Gap											
Width		Pitch		Thickness		Sideflexing Radius		Hinge		Materials	
inch	mm	inch	mm	inch	mm	inch	mm	inch	mm	Plate	
3 ¼	82,6	1 ½	38,1	0.118	3	19.685	500	1.654	42	SS-4	P
3.30	83,8	1 ½	38,1	0.118	3	19.685	500	1.654	42	SS-4	P
4 ½	114,3	1 ½	38,1	0.118	3	19.685	500	1.654	42	SS-4	P
7 ½	190,5	1 ½	38,1	0.118	3	19.685	500	1.654	42	SS-4	P



PHD 981M – Magnetic, Reduced Plate Gap, Heat Treated Pin											
Width		Pitch		Thickness		Sideflexing Radius		Hinge		Materials	
inch	mm	inch	mm	inch	mm	inch	mm	inch	mm	Plate	
3 ¼	82,6	1 ½	38,1	0.118	3	19.685	500	1.654	42	P	
3.30	83,8	1 ½	38,1	0.118	3	19.685	500	1.654	42	P	
4 ½	114,3	1 ½	38,1	0.118	3	19.685	500	1.654	42	P	
7 ½	190,5	1 ½	38,1	0.118	3	19.685	500	1.654	42	P	



PHD 9857M – Magnetic, Heavy Duty Single Hinge, Heat Treated Pin											
Width		Pitch		Thickness		Sideflexing Radius		Hinge		Materials	
inch	mm	inch	mm	inch	mm	inch	mm	inch	mm	Plate	
7 ½	190,5	1 ½	38,1	0.118	3	29.528	750	2.244	57	P	



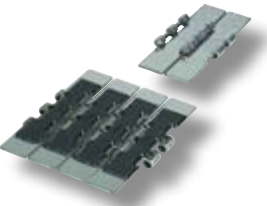
982T – TAB, Reduced Sideflexing Radius											
Width		Pitch		Thickness		Sideflexing Radius		Hinge		Materials	
inch	mm	inch	mm	inch	mm	inch	mm	inch	mm	Plate	
3 ¼	82,6	1 ½	38,1	0.118	3	7.874	200	1.693	43	SS	

Rubberized Surface Steel Chains



PHDG 915 – Straight Running, Single Hinge, Heat Treated Pin

Width		Pitch		Thickness		Gap		Hinge		Materials	
inch	mm	inch	mm	inch	mm	inch	mm	inch	mm	Plate	Rubber
3 ¼	82,6	1 ½	38,1	0.118	3	0.063	1,6	1.654	42	P	NBR
4 ½	114,3	1 ½	38,1	0.118	3	0.063	1,6	1.654	42	P	NBR
7 ½	190,5	1 ½	38,1	0.118	3	0.063	1,6	1.654	42	P	NBR



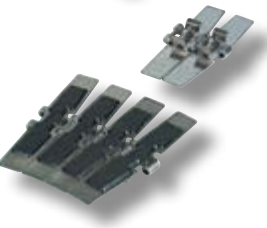
PHDG 2815 – Straight Running, Double hinge, Heat Treated Pin

Width		Pitch		Thickness		Gap		Hinge		Materials	
inch	mm	inch	mm	inch	mm	inch	mm	inch	mm	Plate	Rubber
7 ½	190,5	1 ½	38,1	0.118	3	0.071	1,8	3.150	80	P	NBR



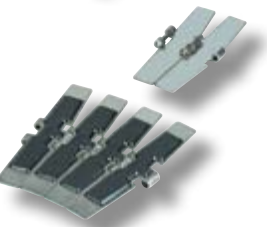
PHDG 9157 – Straight Running, Heavy Duty Single Hinge, Heat Treated Pin

Width		Pitch		Thickness		Gap		Hinge		Materials	
inch	mm	inch	mm	inch	mm	inch	mm	inch	mm	Plate	Rubber
7 ½	190,5	1 ½	38,1	0.118	3	0.063	1,6	2.244	57	P	NBR



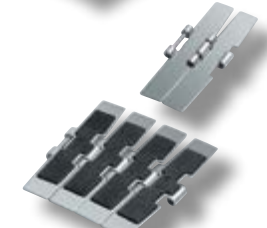
PHDG 981T – Sideflexing TAB, Heat Treated Pin

Width		Pitch		Thickness		Sideflexing Radius		Hinge		Materials	
inch	mm	inch	mm	inch	mm	inch	mm	inch	mm	Plate	Rubber
3 ¼	82,6	1 ½	38,1	0.118	3	18	457,2	1.693	43	P	NBR
7 ½	190,5	1 ½	38,1	0.118	3	24	609,6	1.693	43	P	NBR



PHDG 981M – Sideflexing Magnetic, Heat Treated Pin

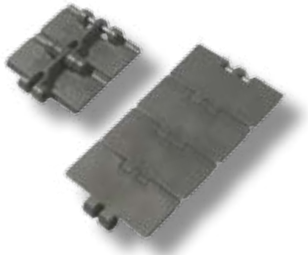
Width		Pitch		Thickness		Sideflexing Radius		Hinge		Materials	
inch	mm	inch	mm	inch	mm	inch	mm	inch	mm	Plate	Rubber
3 ¼	82,6	1 ½	38,1	0.118	3	18	457,2	1.693	43	P	NBR
7 ½	190,5	1 ½	38,1	0.118	3	24	609,6	1.693	43	P	NBR



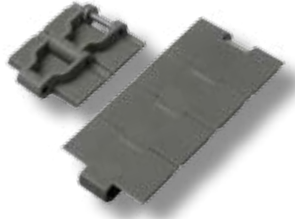
PHDG 9857M – Sideflexing Magnetic, Heavy Duty Single Hinge, Heat Treated Pin

Width		Pitch		Thickness		Sideflexing Radius		Hinge		Materials	
inch	mm	inch	mm	inch	mm	inch	mm	inch	mm	Plate	Rubber
7 ½	190,5	1 ½	38,1	0.118	3	29.528	750	2.244	57	P	NBR

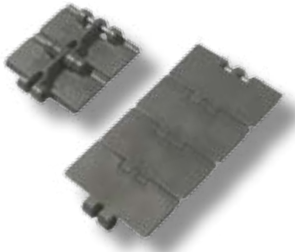
Straight Running Plastic Chains



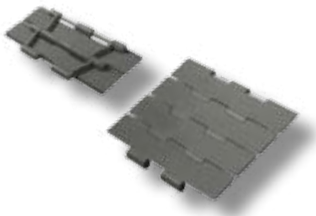
820 - Single Hinge											
Width		Pitch		Thickness		Backflexing Radius		Hinge		Materials	
inch	mm	inch	mm	inch	mm	inch	mm	inch	mm	Plate	
3 ¼	82,6	1 ½	38,1	0.157	4	1.575	40	1.638	41,6	UP	DK ² AR
3.30	83,8	1 ½	38,1	0.157	4	1.575	40	1.638	41,6	UP	DK ²
4	101,6	1 ½	38,1	0.157	4	1.575	40	1.638	41,6	UP	
4 ½	114,3	1 ½	38,1	0.157	4	1.575	40	1.638	41,6	UP	DK ² AR
6	152,4	1 ½	38,1	0.157	4	1.575	40	1.638	41,6	UP	
7.50	190,5	1 ½	38,1	0.157	4	1.575	40	1.638	41,6	UP	DK ²



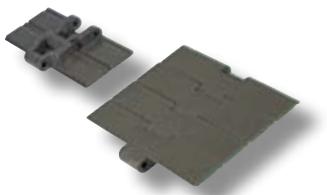
828 - Reinforced Single Hinge, Reduced Plate Gap											
Width		Pitch		Thickness		Backflexing Radius		Hinge		Materials	
inch	mm	inch	mm	inch	mm	inch	mm	inch	mm	Plate	
3 ¼	82,6	1 ½	38,1	0.157	4	1.575	40	1.654	42	UP	DK ² AR
3.30	83,8	1 ½	38,1	0.157	4	1.575	40	1.654	42	UP	DK ²
4 ½	114,3	1 ½	38,1	0.157	4	1.575	40	1.654	42	UP	DK ² AR



831 - Single Hinge, Reinforced Top Plate											
Width		Pitch		Thickness		Backflexing Radius		Hinge		Materials	
inch	mm	inch	mm	inch	mm	inch	mm	inch	mm	Plate	
3 ¼	82,6	1 ½	38,1	0.189	4,8	1.575	40	1.638	41,6	UP	DK ²
3.30	83,8	1 ½	38,1	0.189	4,8	1.575	40	1.638	41,6	UP	DK ²
4 ½	114,3	1 ½	38,1	0.189	4,8	1.575	40	1.638	41,6	UP	DK ²
7.50	190,5	1 ½	38,1	0.189	4,8	1.575	40	1.638	41,6	UP	DK ²

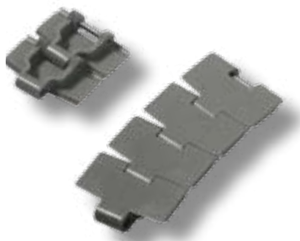


821 - Double Hinge, Reinforced Top Plate											
Width		Pitch		Thickness		Backflexing Radius		Hinge		Materials	
inch	mm	inch	mm	inch	mm	inch	mm	inch	mm	Plate	
7 ½	190,5	1 ½	38,1	0.189	4,8	1.575	40	5.374	136,5	UP	DK ²
10	254	1 ½	38,1	0.189	4,8	1.575	40	5.374	136,5	UP	
12	304,8	1 ½	38,1	0.189	4,8	1.575	40	5.374	136,5	UP	

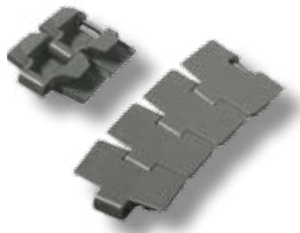


8257 - Heavy Duty Single Hinge, Reinforced Top Plate											
Width		Pitch		Thickness		Backflexing Radius		Hinge		Materials	
inch	mm	inch	mm	inch	mm	inch	mm	inch	mm	Plate	
7 ½	190,5	1 ½	38,1	0.189	4,8	1.575	40	2.244	57	UP	
10	254	1 ½	38,1	0.189	4,8	1.575	40	2.244	57	UP	
12	304,8	1 ½	38,1	0.189	4,8	1.575	40	2.244	57	UP	

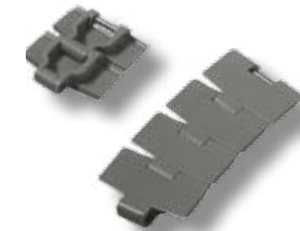
Sideflexing Plastic Chains



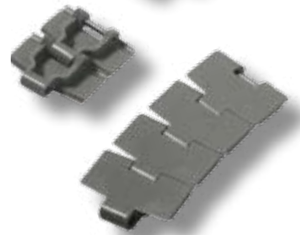
880 - Bevel											
Width		Pitch		Thickness		Sideflexing Radius		Hinge		Materials	
inch	mm	inch	mm	inch	mm	inch	mm	inch	mm	Plate	
3 ¼	82,6	1 ½	38,1	0.157	4	18	457,2	1.693	43	UP	AR
4 ½	114,3	1 ½	38,1	0.157	4	19,685	500	1.693	43	UP	AR



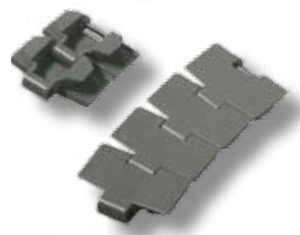
880T - TAB											
Width		Pitch		Thickness		Sideflexing Radius		Hinge		Materials	
inch	mm	inch	mm	inch	mm	inch	mm	inch	mm	Plate	
3 ¼	82,6	1 ½	38,1	0.157	4	18	457,2	1.689	42,9	UP	DK ² AR
3.30	83,8	1 ½	38,1	0.157	4	18	457,2	1.689	42,9	UP	DK ² AR
4 ½	114,3	1 ½	38,1	0.157	4	19.685	500	1.689	42,9	UP	DK ² AR



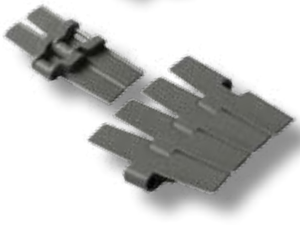
880M RG - Magnetic, Reduced Plate Gap											
Width		Pitch		Thickness		Sideflexing Radius		Hinge		Materials	
inch	mm	inch	mm	inch	mm	inch	mm	inch	mm	Plate	
3 ¼	82,6	1 ½	38,1	0.157	4	19.685	500	1.654	42	UP	DK ² AR
3.30	83,8	1 ½	38,1	0.157	4	19.685	500	1.654	42	UP	DK ² AR
4 ½	114,3	1 ½	38,1	0.157	4	19.685	500	1.654	42	UP	DK ² AR



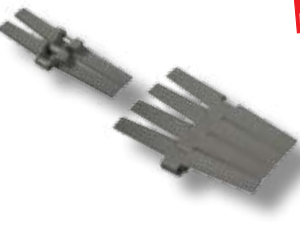
879 - Bevel, Reinforced Top Plate											
Width		Pitch		Thickness		Sideflexing Radius		Hinge		Materials	
inch	mm	inch	mm	inch	mm	inch	mm	inch	mm	Plate	
3 ¼	82,6	1 ½	38,1	0.189	4,8	18	457,2	1.693	43	UP	
4 ½	114,3	1 ½	38,1	0.189	4,8	19.685	500	1.693	43	UP	



879T - TAB, Reinforced Top Plate											
Width		Pitch		Thickness		Sideflexing Radius		Hinge		Materials	
inch	mm	inch	mm	inch	mm	inch	mm	inch	mm	Plate	
3 ¼	82,6	1 ½	38,1	0.189	4,8	18	457,2	1.689	42,9	UP	DK ² AR
3.30	83,8	1 ½	38,1	0.189	4,8	18	457,2	1.689	42,9	UP	DK ² AR
4 ½	114,3	1 ½	38,1	0.189	4,8	19.685	500	1.689	42,9	UP	DK ² AR

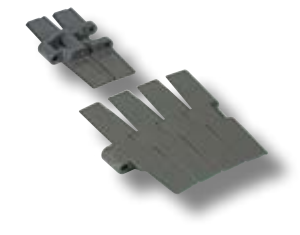


882 - Bevel, Heavy Duty Single Hinge, Reinforced Top plate											
Width		Pitch		Thickness		Sideflexing Radius		Hinge		Materials	
inch	mm	inch	mm	inch	mm	inch	mm	inch	mm	Plate	
4 ½	114,3	1 ½	38,1	0.189	4,8	24	609,6	2.402	61	UP	
7 ½	190,5	1 ½	38,1	0.189	4,8	24	609,6	2.402	61	UP	
10	254	1 ½	38,1	0.189	4,8	24	609,6	2.402	61	UP	
12	304,8	1 ½	38,1	0.189	4,8	24	609,6	2.402	61	UP	



RANGE EXTENSION

882T - TAB, Heavy Duty Single Hinge, Reinforced Top plate											
Width		Pitch		Thickness		Sideflexing Radius		Hinge		Materials	
inch	mm	inch	mm	inch	mm	inch	mm	inch	mm	Plate	
4 ½	114,3	1 ½	38,1	0.189	4,8	24	609,6	2.244	57	UP	DK ² AR
NEW 6	152,4	1 ½	38,1	0.189	4,8	24	609,6	2.244	57	UP	DK ² AR
7 ½	190,5	1 ½	38,1	0.189	4,8	24	609,6	2.244	57	UP	DK ² AR
10	254	1 ½	38,1	0.189	4,8	24	609,6	2.244	57	UP	DK ² AR
12	304,8	1 ½	38,1	0.189	4,8	24	609,6	2.244	57	UP	DK ² AR



882M - Magnetic, Heavy Duty Single Hinge, Reinforced Top Plate											
Width		Pitch		Thickness		Sideflexing Radius		Hinge		Materials	
inch	mm	inch	mm	inch	mm	inch	mm	inch	mm	Plate	
7 ½	190,5	1 ½	38,1	0.189	4,8	24	609,6	2.244	57	UP	
10	254	1 ½	38,1	0.189	4,8	24	609,6	2.244	57	UP	
12	304,8	1 ½	38,1	0.189	4,8	24	609,6	2.244	57	UP	



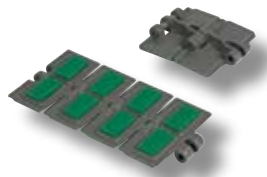
878T - TAB, Reinforced Top Plate, Reduced Sideflexing Radius											
Width		Pitch		Thickness		Sideflexing Radius		Hinge		Materials	
inch	mm	inch	mm	inch	mm	inch	mm	inch	mm	Plate	
3 ¼	82,6	1 ½	38,1	0.189	4,8	7.874	200	1.689	42,9	UP	DK ² AR



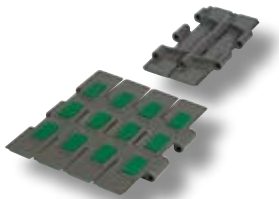
880TA – TAB, Vacuum Series											
Width		Pitch		Thickness		Sideflexing Radius		Hinge		Materials	
inch	mm	inch	mm	inch	mm	inch	mm	inch	mm	Plate	Rubber
3 ¼	82,6	1 ½	38,1	0.157	4	18	457,2	1.689	42,9	UP	TPE

FliteTop®

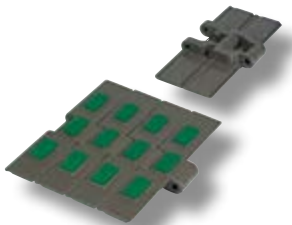
Rubberized Surface Plastic Chains



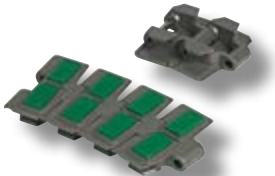
HFX 820 – Straight Running, Single Hinge											
Width		Pitch		Thickness		Backflexing Radius		Hinge		Materials	
inch	mm	inch	mm	inch	mm	inch	mm	inch	mm	Plate	Rubber
3 ¼	82,6	1 ½	38,1	0.157	4	1.575	40	1.638	41,6	UP	TPE
4	101,6	1 ½	38,1	0.157	4	1.575	40	1.638	41,6	UP	TPE
4 ½	114,3	1 ½	38,1	0.157	4	1.575	40	1.638	41,6	UP	TPE
6	152,4	1 ½	38,1	0.157	4	1.575	40	1.638	41,6	UP	TPE
7 ½	190,5	1 ½	38,1	0.157	4	1.575	40	1.638	41,6	UP	TPE



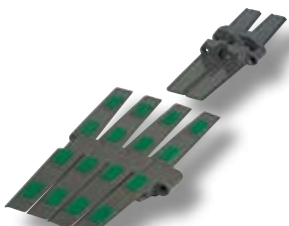
HFX 821 – Straight Running, Double Hinge											
Width		Pitch		Thickness		Backflexing Radius		Hinge		Materials	
inch	mm	inch	mm	inch	mm	inch	mm	inch	mm	Plate	Rubber
7 ½	190,5	1 ½	38,1	0.189	4,8	1.575	40	5.374	136,5	UP	TPE
10	254	1 ½	38,1	0.189	4,8	1.575	40	5.374	136,5	UP	TPE
12	304,8	1 ½	38,1	0.189	4,8	1.575	40	5.374	136,5	UP	TPE



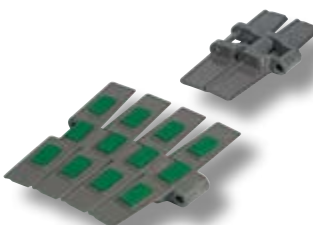
HFX 8257 – Straight Running, Heavy Duty Single Hinge											
Width		Pitch		Thickness		Backflexing Radius		Hinge		Materials	
inch	mm	inch	mm	inch	mm	inch	mm	inch	mm	Plate	Rubber
7 ½	190,5	1 ½	38,1	0.189	4,8	1.575	40	2.244	57	UP	TPE
10	254	1 ½	38,1	0.189	4,8	1.575	40	2.244	57	UP	TPE
12	304,8	1 ½	38,1	0.189	4,8	1.575	40	2.244	57	UP	TPE



HFX 880T – Sideflexing TAB											
Width		Pitch		Thickness		Sideflexing Radius		Hinge		Materials	
inch	mm	inch	mm	inch	mm	inch	mm	inch	mm	Plate	Rubber
3 ¼	82,6	1 ½	38,1	0.157	4	18	457,2	1.689	42,9	UP	TPE
4 ½	114,3	1 ½	38,1	0.157	4	19.685	500	1.689	42,9	UP	TPE



HFX 882T – Sideflexing TAB, Heavy Duty Single Hinge											
Width		Pitch		Thickness		Sideflexing Radius		Hinge		Materials	
inch	mm	inch	mm	inch	mm	inch	mm	inch	mm	Plate	Rubber
4 ½	114,3	1 ½	38,1	0.189	4,8	24	609,6	2.244	57	UP	TPE
7 ½	190,5	1 ½	38,1	0.189	4,8	24	609,6	2.244	57	UP	TPE
10	254	1 ½	38,1	0.189	4,8	24	609,6	2.244	57	UP	TPE
12	304,8	1 ½	38,1	0.189	4,8	24	609,6	2.244	57	UP	TPE

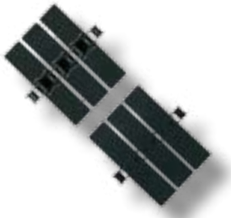


HFX 882M – Sideflexing Magnetic, Heavy Duty Single Hinge											
Width		Pitch		Thickness		Sideflexing Radius		Hinge		Materials	
inch	mm	inch	mm	inch	mm	inch	mm	inch	mm	Plate	Rubber
7 ½	190,5	1 ½	38,1	0.189	4,8	24	609,6	2.244	57	UP	TPE
10	254	1 ½	38,1	0.189	4,8	24	609,6	2.244	57	UP	TPE
12	304,8	1 ½	38,1	0.189	4,8	24	609,6	2.244	57	UP	TPE

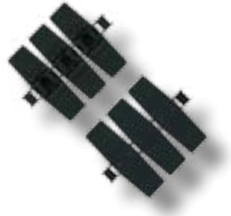


HFX 1873T - Two-piece, Sideflexing TAB, 3/4" Pitch													
Width		Pitch		Thickness		Sideflexing Radius		Hinge		Materials			
inch	mm	inch	mm	inch	mm	inch	mm	inch	mm	Base chain	Flight	UP	Rubber
3 1/4	82,6	3/4	19,05	0.157	4	14	355,6	1.264	32,1	S	SS	UP	TPE
4 1/2	114,3	3/4	19,05	0.157	4	14	355,6	1.264	32,1	S	SS	UP	TPE
6	152,4	3/4	19,05	0.157	4	18	457,2	1.264	32,1	S	SS	UP	TPE
7 1/2	190,5	3/4	19,05	0.157	4	18	457,2	1.264	32,1	S	SS	UP	TPE
10	254	3/4	19,05	0.157	4	18	457,2	1.264	32,1	S	SS	UP	TPE
12	304,8	3/4	19,05	0.157	4	24	609,6	1.264	32,1	S	SS	UP	TPE

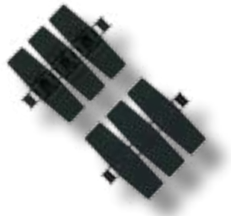
FliteTop® Two-Piece Chains



1864 - Straight Running, Steel Flights, 3/4" Pitch													
Width		Pitch		Thickness		Gap		Hinge		Materials			
inch	mm	inch	mm	inch	mm	inch	mm	inch	mm	Base chain	Flight	UP	Rubber
3 1/4	82,6	3/4	19,05	0.118	3	0.126	3,2	1.063	27	S	SS	S	SS
4 1/2	114,3	3/4	19,05	0.118	3	0.126	3,2	1.063	27	S	SS	S	SS
6	152,4	3/4	19,05	0.118	3	0.126	3,2	1.063	27	S	SS	S	SS
7 1/2	190,5	3/4	19,05	0.118	3	0.126	3,2	1.063	27	S	SS	S	SS



1874T - Sideflexing TAB, Steel Flights, 3/4" Pitch, Flight Gap 8,2 mm													
Width		Pitch		Thickness		Sideflexing Radius		Hinge		Materials			
inch	mm	inch	mm	inch	mm	inch	mm	inch	mm	Base chain	Flight	UP	Rubber
3 1/4	82,6	3/4	19,05	0.118	3	15	381	1.252	31,8	S	SS	S	SS
4 1/2	114,3	3/4	19,05	0.118	3	15	381	1.252	31,8	S	SS	S	SS
6	152,4	3/4	19,05	0.118	3	18	457,2	1.252	31,8	S	SS	S	SS
7 1/2	190,5	3/4	19,05	0.118	3	24	609,6	1.252	31,8	S	SS	S	SS



1874TM - Sideflexing Tab, Steel Flights, 3/4" Pitch, Reduced Flight Gap 5,7 mm													
Width		Pitch		Thickness		Sideflexing Radius		Hinge		Materials			
inch	mm	inch	mm	inch	mm	inch	mm	inch	mm	Base chain	Flight	UP	Rubber
4 1/2	114,3	3/4	19,05	0.118	3	15	381	1.252	31,8	S	SS	S	SS



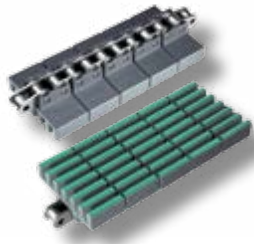
843 - Straight Running, Plastic Flights, 1/2" Pitch													
Width		Pitch		Thickness		Hinge		Materials					
inch	mm	inch	mm	inch	mm	inch	mm	Base chain	Flight	UP	Rubber	UP	Rubber
1 3/8	34,9	1/2	12,7	0.126	3,2	0.811	20,6	S	SS	UP			
2	50,8	1/2	12,7	0.126	3,2	0.811	20,6	S	SS	UP			
3 1/4	82,6	1/2	12,7	0.126	3,2	0.811	20,6	S	SS	UP			



845 - Straight Running, Plastic Flights, 1/2" Pitch, Bidirectional													
Width		Pitch		Thickness		Gap		Hinge		Materials			
inch	mm	inch	mm	inch	mm	inch	mm	inch	mm	Base chain	Flight	UP	Rubber
1 3/8	34,9	1/2	12,7	0.126	3,2	0.008	0,2	0.811	20,6	S	SS	UP	
1.57	40	1/2	12,7	0.126	3,2	0.008	0,2	0.811	20,6	S	SS	UP	
2	50,8	1/2	12,7	0.126	3,2	0.008	0,2	0.811	20,6	S	SS	UP	



RR 845 - Straight Running, Plastic Flights, 1/2" Pitch, Bidirectional, Raised Rib													
Width		Pitch		Thickness		Gap		Hinge		Materials			
inch	mm	inch	mm	inch	mm	inch	mm	inch	mm	Base chain	Flight	UP	Rubber
1.57	40	1/2	12,7	0.480	12,2	0.008	0,2	0.811	20,6	S+NC		UP	
2.11	53,6	1/2	12,7	0.480	12,2	0.008	0,2	0.811	20,6	S+NC		UP	



HF RR 845 – Straight Running, Plastic Flights, ½" Pitch, Bidirectional, Rubberized Raised Rib

Width		Pitch		Thickness		Gap		Hinge		Materials		
inch	mm	inch	mm	inch	mm	inch	mm	inch	mm	Base chain	Flight	Rubber
1.52	38,5	½	12,7	0.496	12,6	0.016	0,4	0.811	20,6	S+NC	PP	TPE
2.19	55,5	½	12,7	0.496	12,6	0.016	0,4	0.811	20,6	S+NC	PP	TPE



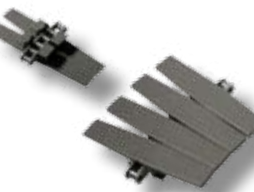
863 – Straight Running, Plastic Flights, ¾" Pitch

Width		Pitch		Thickness		Hinge		Materials		
inch	mm	inch	mm	inch	mm	inch	mm	Base chain	Flight	
3 ¼	82,6	¾	19,05	0.157	4	1.343	34	S	SS	UP
4 ½	114,3	¾	19,05	0.157	4	1.343	34	S	SS	UP
6	152,4	¾	19,05	0.157	4	1.343	34	S	SS	UP
7 ½	190,5	¾	19,05	0.157	4	1.343	34	S	SS	UP



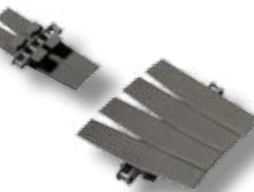
1843T – Sideflexing TAB, Plastic Flights, ½" Pitch

Width		Pitch		Thickness		Sideflexing Radius		Hinge		Materials		
inch	mm	inch	mm	inch	mm	inch	mm	inch	mm	Base chain	Flight	
1 ¼	31,8	1 ½	12,7	0.126	3,2	10	254	0.787	20	S	SS	UP AR



1873T – Sideflexing TAB, Plastic Flights, ¾" Pitch

Width		Pitch		Thickness		Sideflexing Radius		Hinge		Materials		
inch	mm	inch	mm	inch	mm	inch	mm	inch	mm	Base chain	Flight	
3 ¼	82,6	¾	19,05	0.157	4	14	355,6	1.264	32,1	S	SS	UP
4 ½	114,3	¾	19,05	0.157	4	14	355,6	1.264	32,1	S	SS	UP
6	152,4	¾	19,05	0.157	4	18	457,2	1.264	32,1	S	SS	UP
7 ½	190,5	¾	19,05	0.157	4	18	457,2	1.264	32,1	S	SS	UP
10	254	¾	19,05	0.157	4	18	457,2	1.264	32,1	S	SS	UP
12	304,8	¾	19,05	0.157	4	24	690,6	1.264	32,1	S	SS	UP



1863T – Sideflexing TAB, Plastic Flights, ¾" Pitch, Reduced Flight Gap

Width		Pitch		Thickness		Sideflexing Radius		Hinge		Materials		
inch	mm	inch	mm	inch	mm	inch	mm	inch	mm	Base chain	Flight	
2 ¼	57,1	¾	19,05	0.157	4	18	457,2	1.264	32,1	S	SS	UP
3 ¼	82,6	¾	19,05	0.157	4	18	457,2	1.264	32,1	S	SS	UP AR
4 ½	114,3	¾	19,05	0.157	4	18	457,2	1.264	32,1	S	SS	UP AR
7 ½	190,5	¾	19,05	0.157	4	18	609,6	1.264	32,1	S	SS	UP
12	304,8	¾	19,05	0.157	4	18	609,6	1.264	32,1	S	SS	UP
16	406,4	¾	19,05	0.157	4	29.528	750	1.264	32,1	S	SS	UP



NEW

1883 – Spiral Chain, 1" Pitch, Integrated Bearings

Width		Pitch		Thickness		Sideflexing Radius		Hinge		Materials		
inch	mm	inch	mm	inch	mm	inch	mm	inch	mm	Base chain	Flight	
18	457,2	1	25,4	0.189	4,8	25.59	650	1.626	41,3	S	UP	



NEW

HFX 1883 – Spiral Chain, 1" Pitch, Integrated Bearings, Rubberized Flights

Width		Pitch		Thickness		Sideflexing Radius		Hinge		Materials		
inch	mm	inch	mm	inch	mm	inch	mm	inch	mm	Base chain	Flight	Rubber
18	457,2	1	25,4	0.189	4,8	25.59	650	1.626	41,3	S	UP	TPE

FliteTop® Gripper Chains



GV 1874T – Two-Piece Gripper Chains, ¾" Pitch, Steel Flights, Short Fingers

Width		Pitch		Thickness		Sideflexing Radius		Hinge		Materials				
inch	mm	inch	mm	inch	mm	inch	mm	inch	mm	Base chain	Flight	Rubber		
3 ¼	82,6	¾	19,05	0.118	3	15	381	1.252	31,8	S	SS	S	SS	EPDM
4 ½	114,3	¾	19,05	0.118	3	15	381	1.252	31,8	S	SS	S	SS	EPDM



EV 1874T – Two-Piece Gripper Chains, ¾" Pitch, Steel Flights, Long Fingers

Width		Pitch		Thickness		Sideflexing Radius		Hinge		Materials				
inch	mm	inch	mm	inch	mm	inch	mm	inch	mm	Base chain	Flight	Rubber		
3 ¼	82,6	¾	19,05	0.118	3	15	381	1.252	31,8	S	SS	S	SS	EPDM



GW 1873T – Two-Piece Gripper Chains, ¾" Pitch, Plastic Flights, Short Fingers

Width		Pitch		Thickness		Sideflexing Radius		Hinge		Materials				
inch	mm	inch	mm	inch	mm	inch	mm	inch	mm	Base chain	Flight	Rubber		
3 ¼	82,6	¾	19,05	0.157	4	14	355,6	1.264	32,1	S	BS	SS	UP	TPE



EW 1873T – Two-Piece Gripper Chains, ¾" Pitch, Plastic Flights, Long Fingers

Width		Pitch		Thickness		Sideflexing Radius		Hinge		Materials				
inch	mm	inch	mm	inch	mm	inch	mm	inch	mm	Base chain	Flight	Rubber		
3 ¼	82,6	¾	19,05	0.157	4	14	355,6	1.264	32,1	S	BS	SS	UP	TPE HS
4 ½	114,3	¾	19,05	0.157	4	14	355,6	1.264	32,1	S	BS	SS	UP	TPE

RANGE
EXTENSION

GD 1873T – Two-Piece Gripper Chain, ¾" Pitch, Plastic Flights, D-Shape

Width		Pitch		Thickness		Sideflexing Radius		Hinge		Materials				
inch	mm	inch	mm	inch	mm	inch	mm	inch	mm	Base chain	Flight	Rubber		
3 ¼	82,6	¾	19,05	0.157	4	14	355,6	1.264	32,1	S	BS	SS	UP	TPE
7 ½	190,5	¾	19,05	0.157	4	24	609,6	1.264	32,1		SS	UP		TPE HS

NEW



GU 1873T – Two-Piece Gripper Chains, ¾" Pitch, Plastic Flights, U-Shape

Width		Pitch		Thickness		Sideflexing Radius		Hinge		Materials			
inch	mm	inch	mm	inch	mm	inch	mm	inch	mm	Base chain	Flight	Rubber	
3 ¼	82,6	¾	19,05	0.157	4	14	355,6	1.264	32,1	S	SS	UP	TPE
4 ½	114,3	¾	19,05	0.157	4	14	355,6	1.264	32,1	S	SS	UP	TPE

NEW

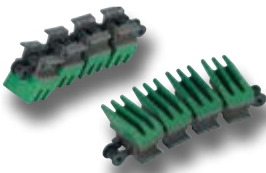
GC 1873T – Two-Piece Gripper Chains, ¾" Pitch, Plastic Flights, "House"-Shape

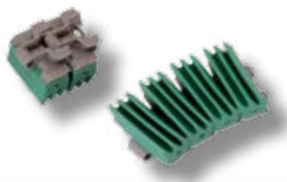
Width		Pitch		Thickness		Sideflexing Radius		Hinge		Materials		
inch	mm	inch	mm	inch	mm	inch	mm	inch	mm	Base chain	Flight	Rubber
8	203,2	¾	19,05	0.157	4	24	609,6	1.264	32,1	SS	UP	TPE HS



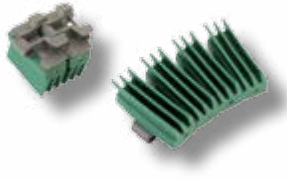
EW 1843T – Two-Piece Gripper Chains, ½" Pitch, Plastic Flights, Long Fingers

Width		Pitch		Thickness		Sideflexing Radius		Hinge		Materials			
inch	mm	inch	mm	inch	mm	inch	mm	inch	mm	Base chain	Flight	Rubber	
1 ½	38,1	½	12,7	0.130	3,2	10	254	1.264	32,1	S	SS	UP	TPE





GW 878T – One-Piece Gripper Chains, Plastic Plates, Short Fingers												
Width		Pitch		Thickness		Sideflexing Radius		Hinge		Materials		
inch	mm	inch	mm	inch	mm	inch	mm	inch	mm	Flight	Rubber	
3 ¼	82,6	1 ½	38,1	0.189	4,8	9.843	250	1.689	42,9	UP	TPE	



EW 878T – One-Piece Gripper Chains, Plastic Plates, Long Fingers												
Width		Pitch		Thickness		Sideflexing Radius		Hinge		Materials		
inch	mm	inch	mm	inch	mm	inch	mm	inch	mm	Flight	Rubber	
3 ¼	82,6	1 ½	38,1	0.189	4,8	9.843	250	1.689	42,9	UP	TPE	



GD 878T – One-Piece Gripper Chains, Plastic Plates, D-Shape												
Width		Pitch		Thickness		Sideflexing Radius		Hinge		Materials		
inch	mm	inch	mm	inch	mm	inch	mm	inch	mm	Flight	Rubber	
3 ¼	82,6	1 ½	38,1	0.189	4,8	9.843	250	1.689	42,9	UP	TPE	



GU 878T – One-Piece Gripper Chains, Plastic Plates, U-Shape												
Width		Pitch		Thickness		Sideflexing Radius		Hinge		Materials		
inch	mm	inch	mm	inch	mm	inch	mm	inch	mm	Flight	Rubber	
3 ¼	82,6	1 ½	38,1	0.189	4,8	9.843	250	1.689	42,9	UP	TPE	

FliteTop®

LBP Chains (Low Back-Line Pressure)



LBP 821 – Straight Running, Double Hinge												
Width		Pitch		Thickness		Backflexing Radius		Hinge		Materials		
inch	mm	inch	mm	inch	mm	inch	mm	inch	mm	Plate	Roller	
7 ½	190,5	1 ½	38,1	0.189	4,8	9.055	230	5.374	136,5	UP	UP	
10	254	1 ½	38,1	0.189	4,8	9.055	230	5.374	136,5	UP	UP	
12	304,8	1 ½	38,1	0.189	4,8	9.055	230	5.374	136,5	UP	UP	



LBP 8257 – Straight Running, Heavy Duty Single Hinge												
Width		Pitch		Thickness		Backflexing Radius		Hinge		Materials		
inch	mm	inch	mm	inch	mm	inch	mm	inch	mm	Plate	Roller	
7 ½	190,5	1 ½	38,1	0.189	4,8	11.811	300	2.244	57	UP	UP	
10	254	1 ½	38,1	0.189	4,8	11.811	300	2.244	57	UP	UP	
12	304,8	1 ½	38,1	0.189	4,8	11.811	300	2.244	57	UP	UP	



LBP 882T – Sideflexing TAB, Heavy Duty Single Hinge												
Width		Pitch		Thickness		Sideflexing Radius		Hinge		Materials		
inch	mm	inch	mm	inch	mm	inch	mm	inch	mm	Plate	Roller	
3 ¾	95,3	1 ½	38,1	0.189	4,8	26.260	667	2.244	57	UP	UP	
4 ½	114,3	1 ½	38,1	0.189	4,8	24	609,6	2.244	57	UP	UP	
7 ½	190,5	1 ½	38,1	0.189	4,8	24	609,6	2.244	57	UP	UP	
10	254	1 ½	38,1	0.189	4,8	24	609,6	2.244	57	UP	UP	
12	304,8	1 ½	38,1	0.189	4,8	24	609,6	2.244	57	UP	UP	



LBP 882M – Sideflexing Magnetic, Heavy Duty Single Hinge

Width		Pitch		Thickness		Sideflexing Radius		Hinge		Materials	
inch	mm	inch	mm	inch	mm	inch	mm	inch	mm	Plate	Roller
7 ½	190,5	1 ½	38,1	0.189	4,8	24	609,6	2.244	57	UP	UP
10	254	1 ½	38,1	0.189	4,8	24	609,6	2.244	57	UP	UP
12	304,8	1 ½	38,1	0.189	4,8	24	609,6	2.244	57	UP	UP

FliteTop® Biplanar Chains



1700 – Sideflexing, Increased Product Support Surface

Width		Pitch		Thickness		Sideflexing Radius		Backflexing Radius		Materials	
inch	mm	inch	mm	inch	mm	inch	mm	inch	mm	Link	
2.17	55	1.97	50	0.157	4	5.512	140	1.969	50	UP	DK ² WA



NEW

1710 – Sideflexing, Zero Gap

Width		Pitch		Thickness		Sideflexing Radius		Backflexing Radius		Materials	
inch	mm	inch	mm	inch	mm	inch	mm	inch	mm	Link	
2.17	55	1.97	50	0.236	6	4.921	125	2.500	63,5	UP	WA



1702 – Sideflexing

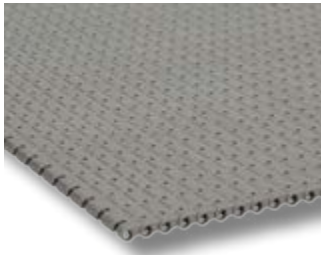
Width		Pitch		Thickness		Sideflexing Radius		Backflexing Radius		Materials	
inch	mm	inch	mm	inch	mm	inch	mm	inch	mm	Link	
2.09	53	1.97	50	0.197	5	5.512	140	1.969	50		WA



1701T – Sideflexing TAB

Width		Pitch		Thickness		Sideflexing Radius		Backflexing Radius		Materials	
inch	mm	inch	mm	inch	mm	inch	mm	inch	mm	Link	
2.09	53	1.97	50	0.197	5	5.512	140	1.969	50	UP	DK ² WA

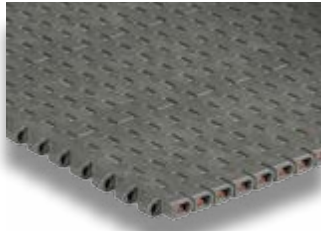
Matveyor® 8 mm Nanopitch Belt



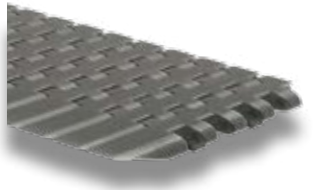
NEW

8300 – Modular Belts, Imperial Standard, Solid Top										
Width		Pitch		Thickness		Tracking Guide Version		Top Surface	Materials	
inch	mm	inch	mm	inch	mm	Without	With		Module	
3	76,2	0.315	8	0.242	6,15	Available	Not Available	Solid	UP	DK ² AR
6" (152,4 mm) or wider in 3" (76,2 mm) increments		0.315	8	0.242	6,15	Available	Not Available	Solid	UP	DK ² AR

Matveyor® ½" Pitch Belts and Chains



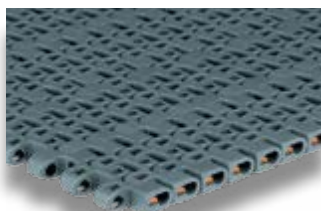
600 – Modular Belts and Dedicated Widths, Metric Standard, Solid Top, Flat Bottom Surface										
Width		Pitch		Thickness		Tracking Guide Version		Top Surface	Materials	
inch	mm	inch	mm	inch	mm	Without	With		Module	
3.35	85	½	12,7	0.343	8,7	Available	Available	Solid	UP	DK ² PP
6.69" (170 mm) or wider in 3.35" (85 mm) increments		½	12,7	0.343	8,7	Available	Available	Solid	UP	DK ² PP



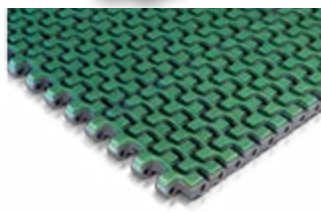
600G ATM – Active Transfer Modules, Metric Standard, Solid Top										
	Width		Pitch		Thickness		Tracking Guide Version		Top Surface	Materials
	inch	mm	inch	mm	inch	mm	Without	With		Module
Left version	4.33	110	½	12,7	0.343	8,7	Not Available	Available	Solid	UP DK ²
Right version	4.33	110	½	12,7	0.343	8,7	Not Available	Available	Solid	UP DK ²



610 – Modular Belts and Dedicated Widths, Metric Standard, Solid Top, Round Bottom Surface										
Width		Pitch		Thickness		Tracking Guide Version		Top Surface	Materials	
inch	mm	inch	mm	inch	mm	Without	With		Module	
3.35	85	½	12,7	0.343	8,7	Available	Available	Solid	UP	DK ² PP
6.69" (170 mm) or wider in 3.35" (85 mm) increments		½	12,7	0.343	8,7	Available	Available	Solid	UP	DK ² PP



500 – Modular Belts and Dedicated Widths, Metric Standard, Flush Grid										
Width		Pitch		Thickness		Tracking Guide Version		Top Surface	Materials	
inch	mm	inch	mm	inch	mm	Without	With		Module	
3.35	85	½	12,7	0.343	8,7	Available	Available	Flush Grid	UP	PP
6.69" (170 mm) or wider in 3.35" (85 mm) increments		½	12,7	0.343	8,7	Available	Available	Flush Grid	UP	PP



HF 510 – Modular Belts and Dedicated Widths, Metric Standard, Rubberized Surface, Full Cover											
Width		Pitch		Thickness		Tracking Guide Version		Top Surface	Materials		
inch	mm	inch	mm	inch	mm	Without	With		Module	Rubber	
3.35	85	½	12,7	0.343	8,7	Available	Available	Rubber	UP	PP	ULF TPE
6.69" (170 mm) or wider in 3.35" (85 mm) increments		½	12,7	0.343	8,7	Available	Available	Rubber	UP	PP	ULF TPE

NEW

LBP 610 – Modular Belts and Dedicated Widths, Metric Standard, LBP Rollers

Width		Pitch		Thickness		Tracking Guide Version		Top Surface	Materials	
inch	mm	inch	mm	inch	mm	Without	With		Module	Roller
3.35	85	½	12,7	0.343	8,7	Available	Available	Solid	UP	UP
6.69" (170 mm) or wider in 3.35" (85 mm) increments		½	12,7	0.343	8,7	Available	Available	Solid	UP	UP

300 – Modular Belts and Dedicated Widths, Imperial Standard, Solid Top

Width		Pitch		Thickness		Tracking Guide Version		Top Surface	Materials	
inch	mm	inch	mm	inch	mm	Without	With		Module	
3	76,2	½	12,7	0.343	8,7	Available	Not Available	Solid	UP	DK ² PP
4½	114,3	½	12,7	0.343	8,7	Available	Not Available	Solid	UP	DK ² PP
6" (152,4 mm) or wider in 3" (76,2 mm) increments		½	12,7	0.343	8,7	Available	Not Available	Solid	UP	DK ² PP

300G ATM – Active Transfer Modules, Imperial Standard, Solid Top

	Width		Pitch		Thickness		Tracking Guide Version		Top Surface	Materials	
	inch	mm	inch	mm	inch	mm	Without	With		Module	
Left version	6.30	160	½	12,7	0.343	8,7	Not Available	Available	Solid	UP	DK ²
Right version	6.30	160	½	12,7	0.343	8,7	Not Available	Available	Solid	UP	DK ²

200 – Modular Belts and Dedicated Widths, Imperial Standard, Flush Grid

Width		Pitch		Thickness		Tracking Guide Version		Top Surface	Materials	
inch	mm	inch	mm	inch	mm	Without	With		Module	
3	76,2	½	12,7	0.343	8,7	Available	Not Available	Flush grid	UP	PP
6" (152,4 mm) or wider in 3" (76,2 mm) increments		½	12,7	0.343	8,7	Available	Not Available	Flush grid	UP	PP

HF 200 – Modular Belts and Dedicated Widths, Imperial Standard, Rubberized Surface, Full Cover

Width		Pitch		Thickness		Tracking Guide Version		Top Surface	Materials		
inch	mm	inch	mm	inch	mm	Without	With		Module	Rubber	
3	76,2	½	12,7	0.343	8,7	Available	Not Available	Rubber	UP	PP	TPE
6" (152,4 mm) or wider in 3" (76,2 mm) increments		½	12,7	0.343	8,7	Available	Not Available	Rubber	UP	PP	TPE

NEW

611 – Narrow Chains, Solid Top

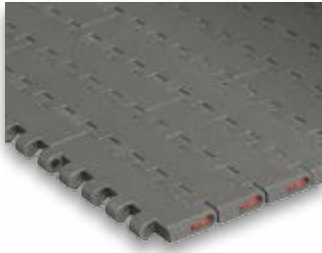
Width		Pitch		Thickness		Tracking Guide Version		Top Surface	Materials	
inch	mm	inch	mm	inch	mm	Without	With		Module	
1.14	29	½	12,7	0.343	8,7	Not Available	Available	Solid	UP	
1.34	34	½	12,7	0.343	8,7	Available	Available	Solid	UP	
1.46	37	½	12,7	0.343	8,7	Available	Available	Solid	UP	
2.01	51	½	12,7	0.343	8,7	Available	Available	Solid	UP	
2.99	76	½	12,7	0.343	8,7	Available	Available	Solid	UP	




NEW

RR 611 – Narrow Chains, Raised Rib




Width		Pitch		Thickness		Tracking Guide Version		Top Surface	Materials	
inch	mm	inch	mm	inch	mm	Without	With		Module	
1.14	29	½	12,7	0.343	8,7	Available	Not Available	Raised Rib	UP	
1.46	37	½	12,7	0.343	8,7	Available	Available	Raised Rib	UP	
1.81	46	½	12,7	0.343	8,7	Available	Not Available	Raised Rib	UP	
2.17	55	½	12,7	0.343	8,7	Available	Not Available	Raised Rib	UP	
2.99	76	½	12,7	0.343	8,7	Available	Not Available	Raised Rib	UP	

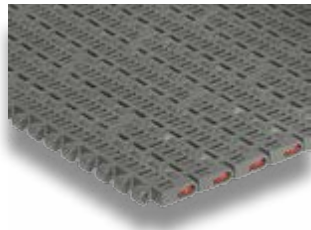
1" Pitch Light Duty Belts and Chains





1600 – Modular Belts and Dedicated Widths, Metric Standard, Solid Top										
Width		Pitch		Thickness		Tracking Guide Version		Top Surface	Materials	
inch	mm	inch	mm	inch	mm	Without	With		Module	
3.30	83,8	1	25,4	0.343	8,7	Not Available	Available	Solid	UP	
3.35	85	1	25,4	0.343	8,7	Available	Available	Solid	UP	
6.69" (170 mm) or wider in 3.35" (85 mm) increments		1	25,4	0.343	8,7	Available	Available	Solid	UP	




1600G ATM – Active Transfer Modules, Metric Standard, Solid Top											
	Width		Pitch		Thickness		Tracking Guide Version		Top Surface	Materials	
	inch	mm	inch	mm	inch	mm	Without	With		Module	
Left version	4.33	110	1	25,4	0.343	8,7	Not Available	Available	Solid	UP	
Right version	4.33	110	1	25,4	0.343	8,7	Not Available	Available	Solid	UP	
Right version	7.68	195	1	25,4	0.343	8,7	Not Available	Available	Solid	UP	



1500 – Modular Belts and Dedicated Widths, Metric Standard, Flush Grid										
Width		Pitch		Thickness		Tracking Guide Version		Top Surface	Materials	
inch	mm	inch	mm	inch	mm	Without	With		Module	
3.35	85	1	25,4	0.343	8,7	Available	Available	Flush Grid	UP	 PP
6.69" (170 mm) or wider in 3.35" (85 mm) increments		1	25,4	0.343	8,7	Available	Available	Flush Grid	UP	 PP



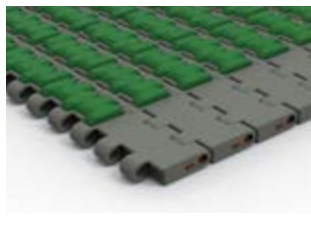
1500G ATM – Active Transfer Modules, Metric Standard, Flush Grid											
	Width		Pitch		Thickness		Tracking Guide Version		Top Surface	Materials	
	inch	mm	inch	mm	inch	mm	Without	With		Module	
Right version	7.68	195	1	25,4	0.343	8,7	Not Available	Available	Flush Grid	UP	



RR 1500 – Modular Belts, Metric Standard, Raised Rib										
Width		Pitch		Thickness		Tracking Guide Version		Top Surface	Materials	
inch	mm	inch	mm	inch	mm	Without	With		Module	
6.69" (170 mm) or wider in 3.35" (85 mm) increments		1	25,4	0.343	8,7	Available	Not Available	Raised Rib	UP	



HF 1600 – Modular Belts and Dedicated Widths, Metric Standard, Rubberized Surface, Full Cover											
Width		Pitch		Thickness		Tracking Guide Version		Top Surface	Materials		
inch	mm	inch	mm	inch	mm	Without	With		Module	Rubber	
3.35	85	1	25,4	0.343	8,7	Available	Available	Rubber	UP	PP	TPE
6.69" (170 mm) or wider in 3.35" (85 mm) increments		1	25,4	0.343	8,7	Available	Available	Rubber	UP	PP	TPE



HFS 1600 – Modular Belts, Metric Standard, Rubberized Surface, Side Indent											
Width		Pitch		Thickness		Tracking Guide Version		Top Surface	Materials		
inch	mm	inch	mm	inch	mm	Without	With		Module	Rubber	
10.04" (255 mm) or wider in 3.35" (85 mm) increments		1	25,4	0.343	8,7	Available	Available	Rubber	UP	PP	TPE



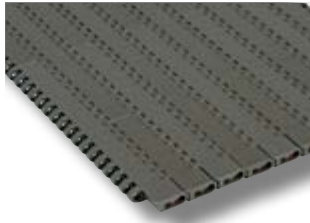
RR 1600 – Dedicated Widths, Raised Rib										
Width		Pitch		Thickness		Tracking Guide Version		Top Surface	Materials	
inch	mm	inch	mm	inch	mm	Without	With		Module	
1.18	30	1	25,4	0.343	8,7	Available	Not Available	Raised Rib	UP	PP
1.52	38,5	1	25,4	0.343	8,7	Available	Not Available	Raised Rib	UP	PP
1.85	47	1	25,4	0.343	8,7	Available	Not Available	Raised Rib	UP	PP
2.28	58	1	25,4	0.343	8,7	Available	Not Available	Raised Rib	UP	PP



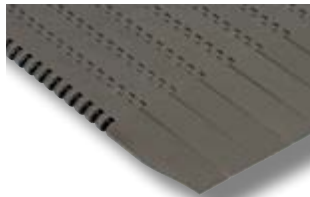
1110 – Modular Belts, Imperial Standard, Raised Rib										
Width		Pitch		Thickness		Tracking Guide Version		Top Surface	Materials	
inch	mm	inch	mm	inch	mm	Without	With		Module	
6" (152,4 mm) or wider in 3" (76,2 mm) increments		1	25,4	0.378	9,6	Available	Not Available	Raised Rib	UP	PP

Matveyor®

3/4" Pitch Medium Duty Belts and Chains



7300 – Modular Belts and Dedicated Widths, Imperial Standard, Solid Top										
Width		Pitch		Thickness		Tracking Guide Version		Top Surface	Materials	
inch	mm	inch	mm	inch	mm	Without	With		Module	
3 1/4	82,6	3/4	19,05	0.343	8,7	Available	Available	Solid	UP	DK ²
4 1/2	114,3	3/4	19,05	0.343	8,7	Available	Available	Solid	UP	DK ²
6	152,4	3/4	19,05	0.343	8,7	Available	Available	Solid	UP	DK ²
7 1/2	190,5	3/4	19,05	0.343	8,7	Available	Available	Solid	UP	DK ²
9" (228,6mm) or wider in 3" (76,2mm) increments		3/4	19,05	0.343	8,7	Available	Not Available	Solid	UP	DK ²



7300G ATM – Active Transfer Modules, Imperial Standard, Solid Top											
	Width		Pitch		Thickness		Tracking Guide Version		Top Surface	Materials	
	inch	mm	inch	mm	inch	mm	Without	With		Module	
Left version	6.3	160	3/4	19,05	0.343	8,7	Not Available	Available	Solid	UP	DK ²
Right version	6.3	160	3/4	19,05	0.343	8,7	Not Available	Available	Solid	UP	DK ²
Left version	9.3	236,2	3/4	19,05	0.343	8,7	Not Available	Available	Solid	UP	DK ²
Right version	9.3	236,2	3/4	19,05	0.343	8,7	Not Available	Available	Solid	UP	DK ²



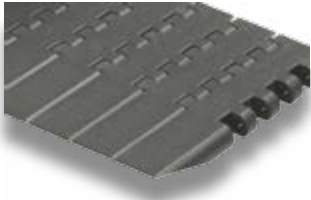
7200 – Modular Belts and Dedicated Widths, Imperial Standard, Flush Grid										
Width		Pitch		Thickness		Tracking Guide Version		Top Surface	Materials	
inch	mm	inch	mm	inch	mm	Without	With		Module	
3 1/4	82,6	3/4	19,05	0.343	8,7	Available	Available	Flush Grid	UP	DK ²
4 1/2	114,3	3/4	19,05	0.343	8,7	Available	Available	Flush Grid	UP	DK ²
6	152,4	3/4	19,05	0.343	8,7	Available	Available	Flush Grid	UP	DK ²
7 1/2	190,5	3/4	19,05	0.343	8,7	Available	Available	Flush Grid	UP	DK ²
9" (228,6mm) or wider in 3" (76,2mm) increments		3/4	19,05	0.343	8,7	Available	Not Available	Flush Grid	UP	DK ²



Matveyor®

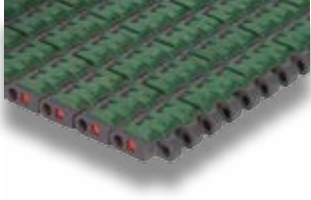
1" Pitch Heavy Duty Belts and Chains



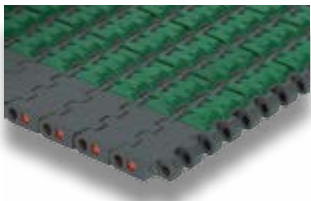
USPM – Modular Belts and Dedicated Widths, Metric Standard, Solid Top										
Width		Pitch		Thickness		Tracking Guide Version		Top Surface	Materials	
inch	mm	inch	mm	inch	mm	Without	With		Module	
3.30	83,8	1	25,4	0.500	12,7	Not Available	Available	Solid	UP	DK ² AR
3.35	85	1	25,4	0.500	12,7	Available	Available	Solid	UP	DK ² AR
6.69" (170 mm) or wider in 3.35"		1	25,4	0.500	12,7	Available	Available	Solid	UP	DK ² AR



USPMG ATM – Active Transfer Modules, Metric Standard, Solid Top												
	Width		Pitch		Thickness		Tracking Guide Version		Top Surface	Materials		
	inch	mm	inch	mm	inch	mm	Without	With		Module		
Left version	5.02	127,5	1	25,4	0.500	12,7	Not Available	Available	Solid	UP		AR
Right version	5.02	127,5	1	25,4	0.500	12,7	Not Available	Available	Solid	UP		AR



HF USPM – Modular Belts and Dedicated Widths, Metric Standard, Rubberized Surface, Full Cover												
	Width		Pitch		Thickness		Tracking Guide Version		Top Surface	Materials		
	inch	mm	inch	mm	inch	mm	Without	With		Module		Rubber
3.35	85	1	25,4	0.500	12,7	Available	Available	Rubber	UP	PP	TPE	
6.69" (170 mm) or wider in 3.35" (85 mm) increments		1	25,4	0.500	12,7	Available	Available	Rubber	UP	PP	TPE	



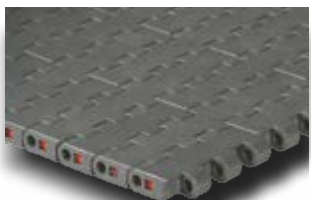
HFS USPM – Modular Belts, Metric Standard, Rubberized Surface, Side Indent												
	Width		Pitch		Thickness		Tracking Guide Version		Top Surface	Materials		
	inch	mm	inch	mm	inch	mm	Without	With		Module		Rubber
10.04" (255 mm) or wider in 3.35" (85 mm) increments		1	25,4	0.500	12,7	Available	Available	Rubber	UP	PP	TPE	







LBP USPM – Modular Belts and Dedicated Widths, Metric Standard, LBP Rollers												
	Width		Pitch		Thickness		Tracking Guide Version		Top Surface	Materials		
	inch	mm	inch	mm	inch	mm	Without	With		Module	Roller	
3.35	85	1	25,4	0.500	12,7	Available	Available	Rollers	UP	UP		
6.69" (170 mm) or wider in 3.35" (85 mm) increments		1	25,4	0.500	12,7	Available	Available	Rollers	UP	UP		







LBP XSPM – Modular Belts and Dedicated Widths, Metric Standard, LBP Rollers, Safety Design												
	Width		Pitch		Thickness		Tracking Guide Version		Top Surface	Materials		
	inch	mm	inch	mm	inch	mm	Without	With		Module	Roller	
3.35	85	1	25,4	0.433	11	Available	Available	Rollers	UP	UP		
6.69" (170 mm) or wider in 3.35" (85 mm) increments		1	25,4	0.433	11	Available	Available	Rollers	UP	UP		






USP – Modular Belts and Dedicated Widths, Imperial Standard, Solid Top												
	Width		Pitch		Thickness		Tracking Guide Version		Top Surface	Materials		
	inch	mm	inch	mm	inch	mm	Without	With		Module		
3 ¼	82,6	1	25,4	0.500	12,7	Available	Available	Solid	UP		AR	
4 ½	114,3	1	25,4	0.500	12,7	Available	Available	Solid	UP		AR	
7 ½	190,5	1	25,4	0.500	12,7	Available	Available	Solid	UP		AR	
6" (152,4 mm) or wider in 3" (76,2 mm) increments		1	25,4	0.500	12,7	Available	Not Available	Solid	UP		AR	




USPG ATM – Active Transfer Modules, Imperial Standard, Solid Top												
	Width		Pitch		Thickness		Tracking Guide Version		Top Surface	Materials		
	inch	mm	inch	mm	inch	mm	Without	With		Module		
Left version	6	152,4	1	25,4	0.500	12,7	Not Available	Available	Solid	UP		AR
Left version	9	228,6	1	25,4	0.500	12,7	Not Available	Available	Solid	UP		AR
Right version	6	152,4	1	25,4	0.500	12,7	Not Available	Available	Solid	UP		AR
Right version	9	228,6	1	25,4	0.500	12,7	Not Available	Available	Solid	UP		AR

1" Pitch Sideflexing Chains


783T - TAB, Solid Top, Light Duty

Width		Pitch		Thickness		Sideflexing Radius		Top Surface	Materials
inch	mm	inch	mm	inch	mm	inch	mm		Plate
3 ¼	82,6	1	25,4	0.343	8,7	18	457,2	Solid	UP 
3.30	83,8	1	25,4	0.343	8,7	18	457,2	Solid	UP 
4 ½	114,3	1	25,4	0.343	8,7	24	609,6	Solid	UP 




783M - Magnetic, Solid Top, Light Duty

Width		Pitch		Thickness		Sideflexing Radius		Top Surface	Materials
inch	mm	inch	mm	inch	mm	inch	mm		Plate
3.30	83,8	1	25,4	0.343	8,7	19.685	500	Solid	UP 



782M - Magnetic, Flush Grid, Light Duty

Width		Pitch		Thickness		Sideflexing Radius		Top Surface	Materials
inch	mm	inch	mm	inch	mm	inch	mm		Plate
3.30	83,8	1	25,4	0.343	8,7	19.685	500	Flush Grid	UP 


793T - TAB, Solid Top, Heavy Duty

Width		Pitch		Thickness		Sideflexing Radius		Top Surface	Materials
inch	mm	inch	mm	inch	mm	inch	mm		Plate
3 ¼	82,6	1	25,4	0.50	12,7	18	457,2	Solid	UP  AR
3.30	83,8	1	25,4	0.50	12,7	18	457,2	Solid	UP  AR
4 ½	114,3	1	25,4	0.50	12,7	24	609,6	Solid	UP  AR

793M - Magnetic, Solid Top, Heavy Duty

Width		Pitch		Thickness		Sideflexing Radius		Top Surface	Materials
inch	mm	inch	mm	inch	mm	inch	mm		Plate
3.30	83,8	1	25,4	0.50	12,7	19.685	500	Solid	UP  AR
4 ½	114,3	1	25,4	0.50	12,7	19.685	500	Solid	UP  AR

793L - Low Pin Center, Solid Top, Heavy Duty

Width		Pitch		Thickness		Sideflexing Radius		Top Surface	Materials
inch	mm	inch	mm	inch	mm	inch	mm		Plate
4 ½	114,3	1	25,4	0.50	12,7	24	609,6	Solid	UP 

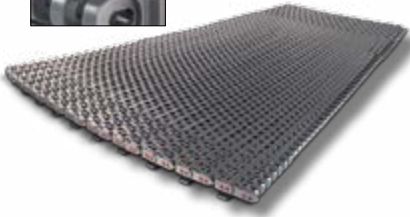
NEW

1 1/4" Heavy Duty Sideflexing Belts



2556HTB - Modular Belts, Metric Standard, TAB+Bearing, Reinforced Outer Modules

Width		Pitch		Thickness		Medium Sideflexing Radius		Top Surface	Materials
inch	mm	inch	mm	inch	mm	inch	mm		Module
10.04	255	1 1/4	31,75	0.500	12,7	23.622	600	Flush Grid	UP
13.39	340	1 1/4	31,75	0.500	12,7	31.496	800	Flush Grid	UP
16.73	425	1 1/4	31,75	0.500	12,7	39.370	1000	Flush Grid	UP
20.08	510	1 1/4	31,75	0.500	12,7	47.244	1200	Flush Grid	UP
23.43	595	1 1/4	31,75	0.500	12,7	55.118	1400	Flush Grid	UP
26.77	680	1 1/4	31,75	0.500	12,7	62.992	1600	Flush Grid	UP
30.12	765	1 1/4	31,75	0.500	12,7	70.866	1800	Flush Grid	UP
33.46	850	1 1/4	31,75	0.500	12,7	78.740	2000	Flush Grid	UP



2556HTB-SR Modular Belts, Metric Standard, TAB+Bearing, Reinforced Outer Modules, Reduced Sideflexing Radius

Width		Pitch		Thickness		Medium Sideflexing Radius		Top Surface	Materials
inch	mm	inch	mm	inch	mm	inch	mm		Module
13.39	340	1 1/4	31,75	0.500	12,7	19.685	500	Flush Grid	UP
16.73	425	1 1/4	31,75	0.500	12,7	23.622	600	Flush Grid	UP
20.08	510	1 1/4	31,75	0.500	12,7	31.496	800	Flush Grid	UP
23.43	595	1 1/4	31,75	0.500	12,7	39.370	1000	Flush Grid	UP
26.77	680	1 1/4	31,75	0.500	12,7	47.244	1200	Flush Grid	UP
30.12	765	1 1/4	31,75	0.500	12,7	55.118	1400	Flush Grid	UP
33.46	850	1 1/4	31,75	0.500	12,7	62.992	1600	Flush Grid	UP

2" Pitch Heavy Duty Raised Ribs Belts











NEW

3125 - Modular Belts, Imperial Standard, Raised Rib, Seamless Product Support at the Edges of the Belt



Width		Pitch		Thickness		Tracking Guide Version		Top Surface	Materials
inch	mm	inch	mm	inch	mm	Without	With		Module
12" (304,8mm) or wider in 3" (76,2mm) increments		2	50,8	0.580	14,2	Available	Not Available	Raised Rib	PP

1 1/2" Heavy Duty UCC Chains



UCC - Dedicated Widths, Imperial Standard, Solid Top										
Width		Pitch		Thickness		Tracking Guide Version		Top Surface	Materials	
inch	mm	inch	mm	inch	mm	Without	With		Module	
3 1/4	82,6	1 1/2	38,1	0.500	12,7	Available	Not Available	Solid		ULF
4 1/2	114,3	1 1/2	38,1	0.500	12,7	Available	Not Available	Solid		ULF
6	152,4	1 1/2	38,1	0.500	12,7	Available	Not Available	Solid		ULF
7 1/2	190,5	1 1/2	38,1	0.500	12,7	Available	Not Available	Solid		ULF
12	304,8	1 1/2	38,1	0.500	12,7	Available	Not Available	Solid		ULF
15	381,0	1 1/2	38,1	0.500	12,7	Available	Not Available	Solid		ULF
18	457,2	1 1/2	38,1	0.500	12,7	Available	Not Available	Solid		ULF
24	609,6	1 1/2	38,1	0.500	12,7	Available	Not Available	Solid		ULF



UCCG ATM - Active Transfer Modules, Imperial Standard, Solid Top										
Width		Pitch		Thickness		Tracking Guide Version		Top Surface	Materials	
inch	mm	inch	mm	inch	mm	Without	With		Module	
6 1/2	165,1	1 1/2	38,1	0.500	12,7	Not Available	Available	Solid		ULF
9 1/2	241,3	1 1/2	38,1	0.500	12,7	Not Available	Available	Solid		ULF



UCC 138 - Dedicated Widths, Imperial Standard, Solid Top										
Width		Pitch		Thickness		Tracking Guide Version		Top Surface	Materials	
inch	mm	inch	mm	inch	mm	Without	With		Module	
1.40	34,9	3/4	19,05	0.591	15	Available	Not Available	Solid	ULF	

Maintenance Free Chains



SINGLE STRAND - European series									
REGINA reference	Pitch		Roller diameter		Inside width		Pin diameter		Materials
	inch	mm	inch	mm	inch	mm	inch	mm	
126BS	½	12,70	0.335	8,51	0.305	7,75	0.175	4,45	BS
136BS	¾	15,88	0.400	10,16	0.380	9,65	0.200	5,09	BS
140BS	¾	19,05	0.475	12,07	0.460	11,68	0.225	5,72	BS
147BS	1	25,40	0.625	15,88	0.670	17,02	0.326	8,28	BS



SINGLE STRAND - American series									
REGINA reference	Pitch		Roller diameter		Inside width		Pin diameter		Materials
	inch	mm	inch	mm	inch	mm	inch	mm	
A40BS	½	12,70	0.312	7,92	0.309	7,85	0.157	3,98	BS
A50BS	¾	15,88	0.400	10,16	0.370	9,40	0.200	5,09	BS
A60BS	¾	19,05	0.469	11,91	0.495	12,57	0.225	5,72	BS
A80BS	1	25,40	0.625	15,88	0.620	15,75	0.313	7,94	BS



DOUBLE STRAND - European series									
REGINA reference	Pitch		Roller diameter		Inside width		Pin diameter		Materials
	inch	mm	inch	mm	inch	mm	inch	mm	
226BS	½	12,70	0.335	8,51	0.305	7,75	0.175	4,45	BS
236BS	¾	15,88	0.400	10,16	0.380	9,65	0.200	5,09	BS
240BS	¾	19,05	0.475	12,07	0.460	11,68	0.225	5,72	BS
247BS	1	25,40	0.625	15,88	0.670	17,02	0.326	8,28	BS



DOUBLE STRAND - American series									
REGINA reference	Pitch		Roller diameter		Inside width		Pin diameter		Materials
	inch	mm	inch	mm	inch	mm	inch	mm	
A40BS-2	½	12,70	0.312	7,92	0.309	7,85	0.157	3,98	BS
A50BS-2	¾	15,88	0.400	10,16	0.370	9,40	0.200	5,09	BS
A60BS-2	¾	19,05	0.469	11,91	0.495	12,57	0.225	5,72	BS
A80BS-2	1	25,40	0.625	15,88	0.620	15,75	0.313	7,94	BS

Components

Molded Sprockets.



For FliteTop® Chains,
Matveyor® Belts and Chains,
ULTOP® Chains

Sprockets Type:

Drive Sprockets
Idler Sprockets
Idler Wheels

Availability of:

Solid & Split Sprockets

Bore Type:

Square (Metric - Imperial)
Round (Metric - Imperial)

Machined Sprockets.



For FliteTop® Chains,
Matveyor® Belts and Chains,
ULTOP® Chains

Sprockets Type:

Drive Sprockets
Idler Sprockets
Idler Wheels

Availability of:

Solid & Split Sprockets

Bore Type:

Square (Metric - Imperial)
Round (Metric - Imperial)

Turning Discs.



For FliteTop® 1700
Series Chains

Combs.



Transfer Combs for Raised
Rib Belts and Chains

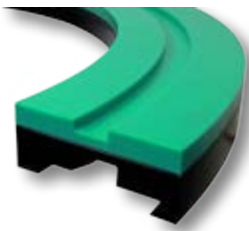
For Belts/Chains:

RR 845
HF RR 845
RR 611
RR 1500
RR 1600
1110
3125

Availability of:

Short Fingers
Long Fingers

Magnetic Curves.



For FliteTop® and Matveyor®
Chains

TAB Curves.



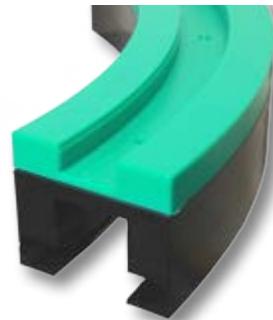
For FliteTop® and Matveyor®
Chains

Bevel Curves.



For FliteTop® Chains

Low Pin Center Curves.



For Matveyor® Chains

Components

NEW

Nosebars.



For end-to-end transfer using Matveyor® Belts

For belts:
½" Pitch Belts

Roller Transfer Plates.



For FliteTop® Chains, Matveyor® Belts and Chains, ULTOP® Chains

Provide to:
Head to Tail Transfers
90° Product Transfers

Availability of:
2-3-5 roller rows
85 & 115 mm widths

NEW

Return Rollers.



For FliteTop® Chains, Matveyor® Belts and Chains, ULTOP® Chains

Rollers type:
Solid
Rubberized

Availability of:
Standard version
Flanged version

NEW

Return Guide Flanges.



For FliteTop® Chains, Matveyor® Belts and Chains, ULTOP® Chains

NEW

Return Shoe Guide.



For FliteTop® LBP Chains and Matveyor® LBP Belts

Chain Guide Wear Strips.



For FliteTop® Chains, Matveyor® Belts and Chains, ULTOP® Chains

NEW

Product Side Guide.



Availability of:
Stainless steel clamp



PERFORMANCE IN MOTION

ITALY

REGINA CATENE CALIBRATE S.p.A.
HEAD OFFICE:
Via Monza, 90
23870 Cernusco Lombardone (LC) - Italy
Tel. +39 039 99801
Fax +39 039 9905229
sales@reginachain.net

USA

REGINA USA, INC.
305 E. Mahn Court
Oak Creek, WI 53154 - USA
Tel. 001 414 5710032
Fax 001 414 5710225
sales.us@reginachain.net

FRANCE

REGINA INDUSTRIE s.a.r.l.
Z.A.C. des Chatelliers
34 Rue des Frères Lumière
45800 Saint Jean De Braye - France
Tel. +33 238 836363
Fax +33 238 836413
sales.fr@reginachain.net

MEXICO

REGINA de MEXICO S.A. de C.V.
Av. Aviación 5051-28
Col. San Juan de Ocotan
45019 Zapopan, Jalisco – Mexico
Tel. +52 33 3627 4043
Fax +52 33 3627 3930
sales.mx@reginachain.net

CHINA

REGINA TIANJIN CHAIN & BELT CO., LTD.
Xi Qing Economic Development Area,
Xiang Rui Road n. 17
Tian Xiang Industrial Zone
300385 Tian Jin - China
Tel. +86 22 83961223
Fax +86 22 83961202
sales.cn@reginachain.net

UNITED KINGDOM

REGINA INTERNATIONAL LIMITED
Unit 1, Dyneley Road,
Greenbank Business Park
Whitebirk, Blackburn,
Lancs BB1 3AB - United Kingdom
Tel. +44 1254 661116
Fax +44 1254 59456
sales.uk@reginachain.net

ARGENTINA

REGINA INTERNATIONAL S.A.
Diagonal 190,
1788-1655 José Leon Suarez
Prov. Buenos Aires – Argentina
Tel. +54 11 47296667
Fax +54 11 47203210
sales.ar@reginachain.net

GERMANY

SALES OFFICE
Tel. +49 1705251348
Fax +49 7181489535
sales.de@reginachain.net

THE NETHERLANDS

SALES OFFICE
Tel. +31 610681114
sales.nl@reginachain.net

SPAIN

CADENAS REGINA ESPAÑA, S.L.
Calle Industria, 37
08120 La Llagosta - Barcelona - España
Tel. +34 93 5742838
Fax +34 93 5740735
sales.es@reginachain.net

INDIA

SALES OFFICE
Tel. +91 9881399026
sales.in@reginachain.net

